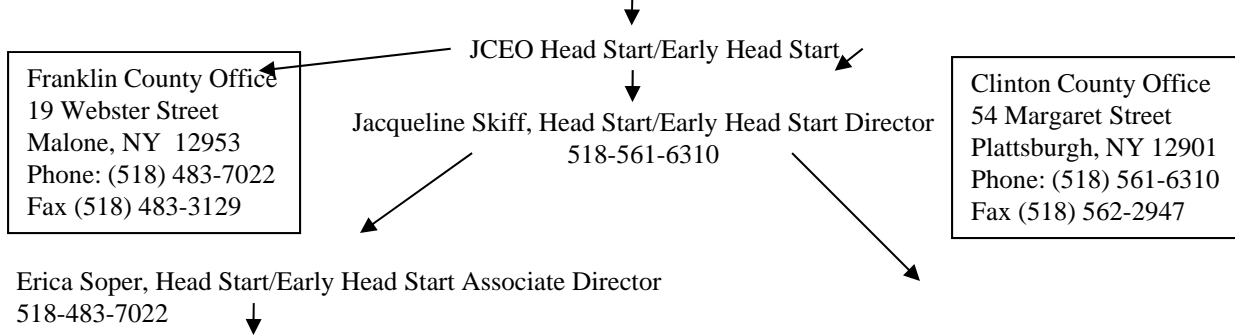


# Joint Council for Economic Opportunity of Clinton and Franklin Counties, Inc. (JCEO)



## Franklin County Head Start Management Staff

- Linda Gonia– 518-483-7022  
PDM Coordinator
- Stephanie Carlisto – 518-483-7022  
Education Services Manager
- Kelly Day– 518-483-7022  
Family and Community Services Coordinator
- Kristen McCaffrey- 518-483-7022  
Mental Health/Special Services Coordinator
- Sarah DiOrio – 518-483-7022  
Family Services Specialist
- Brittany Lashua, RN– 518-483-7022  
Health Services Coordinator

## Clinton County Head Start Management Staff

- Debbie Ciccone– 518-516-6310  
PDM Coordinator
- Angela Williams-Minehan– 518-516-6310  
Education Services Manager
- Kim Dupras– 518-516-6310  
Family and Community Services Coordinator
- Michelle Boynton- 518-516-6310  
Mental Health/Special Services Coordinator
- Debra Hurley – 518-516-6310  
Family Services Assistant
- Monique Trudeau, LPN– 518-516-6310  
Health Services Coordinator

### Franklin County Head Start Centers

- Malone (3 Center-Based,2 Home-Based,3 Early Head Start)  
19 Webster Street, Malone, NY 12953
- Brushton- Moira (1 Center-Based)  
758 County Route 7  
Brushton, NY 12916
- Tupper Lake (1 Center-Based)  
Holy Ghost Academy, Marion Avenue  
Tupper Lake, NY 12986
- Plattsburgh City South (1 Center-Based)  
4917 S. Catherine Street, Plattsburgh, NY 12901
- Saranac (1 Center-Based)  
9 Vaughn Road, Plattsburgh, NY 12901

### Clinton County Head Start Centers

- Beekman (1 Center-Based)  
127 Beekman Street, Plattsburgh, NY 12901
- Beekmantown (Center-Based)  
9 Big Hank Plaza, Plattsburgh, NY 12901
- Champlain (1-Center-Based)  
Three Steeples Church,Route 11, Champlain, NY 12919
- Keeseville (1 Center-Based)  
1908 Route 22, Keeseville, NY 12944
- Northern Adirondack (1 Center-Based)  
5574 Route 11, Ellenburg Depot, NY 12935
- Peru (2 Center-Based)  
11 Big Hank Plaza, Plattsburgh, NY 12901